



Council of Chief Librarians
California Community Colleges

Spring Workshop: Library RE-Design

April 26 & 27, 2017

Presenters:
Will Baty, MLIS
Patricia G. Alarcón, RA

AGENDA - MORNING

- 9:00 AM** **Welcome & Introductions**
- 9:20 AM** **Library Facility Planning: The LLRC**
- 9:30 AM** **Libraries Today: Design for Learning**
- 10:00 AM** **Quantifying the Need: Data Collection & Use**
- 10:30 AM** **Visioning Session: The “Ideal” CC Library**
- 11:40 AM** **Share-out & Q & A**
- 12:00 PM** ***LUNCH BREAK***

AGENDA - AFTERNOON

- 1:00 PM The Library Design Process**
- 1:20 PM Role of the Architects & Consultants**
- 1:30 PM A Case Study – Foothill College Renovation**
- 2:15 PM The State Facilities Process**
- 2:30 PM Under construction & Post Occupancy**
- 2:45 PM Share-out & Q & A**
- 3:15 PM Adjournment – Whew!!!**

Welcome & Introductions



- **30+ years of professional academic library experience**
- **Currency and knowledge of major library/ LRC design issues**
- **Extensive experience in technology integration in learning environments**
- **Successful project experience working with DSA and chancellor's office**

Will Baty, LCS



- **50+ person firm in continuous practice for over 100 years**
- **Breadth of experience with new construction and renovations**
- **Legacy of successfully serving higher education clients**
- **Leaders in participatory-design practice**
- **Driven by goal of supporting student success**



Patricia Alarcón, **RATCLIFF**

Library Planning: The Academic Library/ LRC

CCL Spring Workshop



Academic Libraries – The Big Picture



Key Library Trends

ACRL Future Trends 2016:

- 12 Key findings, 7 of which have direct impact on facilities
- A focus on Collection Development, collection size & usage
- Instruction & Student Success and analytics
- URL:

<http://crln.acrl.org/content/7/7/6/274.full>

CCL Spring Workshop



Key Library Trends

ALA Center for the Future of Libraries

- ALA has identified seven overarching trends (STEEPED)
- Broad categories are: Society, Technology, Education, Environment, Politics and Government, Economics & Demographics
- Within broad categories, specific trends are identified
- Most of these trends have facility and space implications
- URL:
<http://www.ala.org/transforminglibraries/future/trends>

Higher Education & Libraries



- Identification of Different Learning Styles
- Impact of Technology: network, resources, storage
- Student Success and Outcomes

Libraries Today: Design for Learning

Library as “Place”

- **The design metaphor of Place, speaks to the Library’s essential role in academia**
- **Design facility around needs of the learner**
- **Create a presence that reinforces learning**
- **Integrate services, collections and technology**



CCL Spring Workshop



CCL Spring Workshop



CCL Spring Workshop



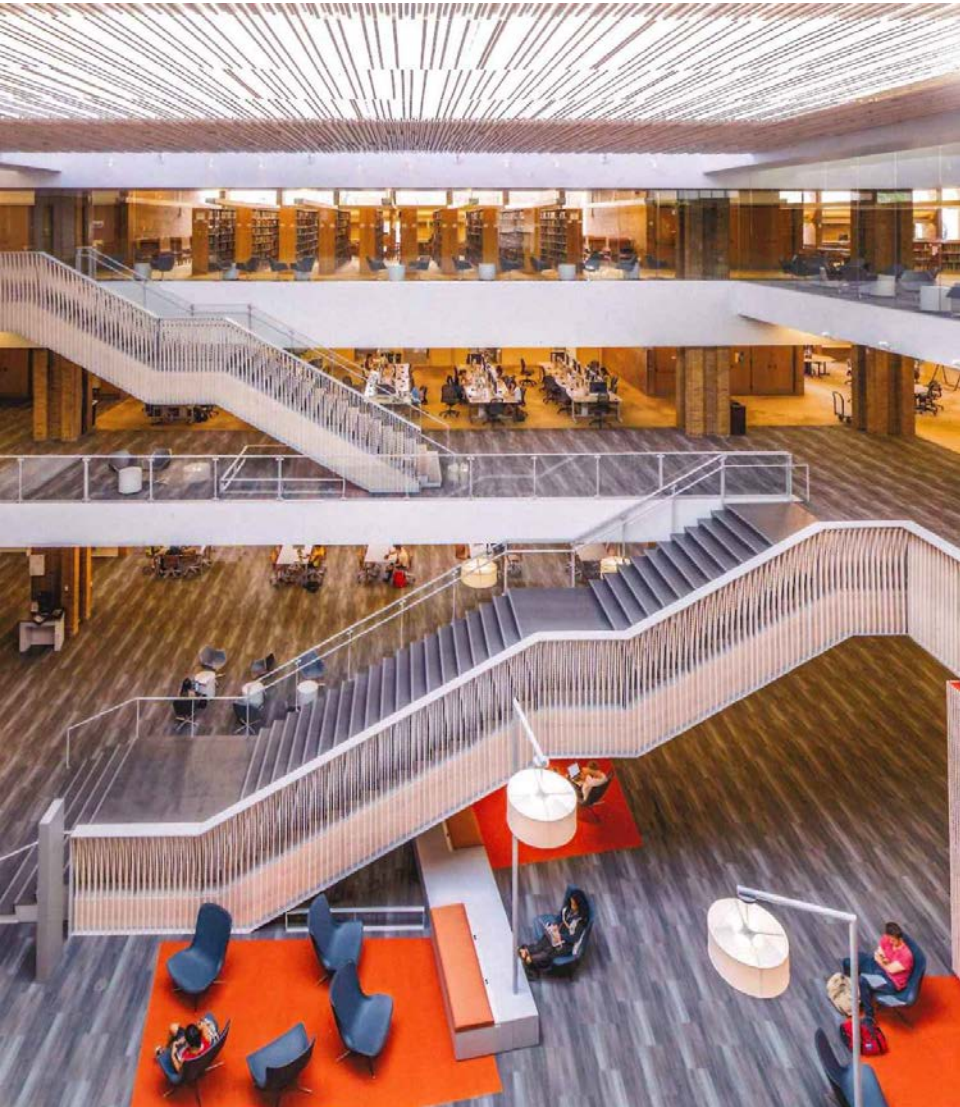
CCL Spring Workshop

Trends in Academic Library Design



- Creating a literal and symbolic center
- Library as “Place”

Trends in Academic Library Design



- Learning occurs everywhere
- Learning is a social phenomena
- Learning spaces need to be varied and flexible

Essential Design Parameters



- Building to be designed around the users
- Emphasize a place for learning, studying and teaching
- Design must be transparent, open and legible.
- Design must be flexible and accommodate changes in collections, services and technology

CCL Spring Workshop

Essential Design Parameters



- Libraries must provide access to information regardless of the storage format, print, media, and digital.
- The evolution of digital networks have changed the dynamics of storage; the network and the Internet are the new storage mediums.

CCL Spring Workshop

Essential Design Parameters



- Collections do not necessarily have to be on-site to be accessible.
- Libraries are technology integrators; they are laboratories for testing new ideas.



The Hub

LANDING ZONES



Occidental College Library



UC Berkeley Law Library



PUBLIC SERVICE DESKS



PUBLIC SERVICE DESKS



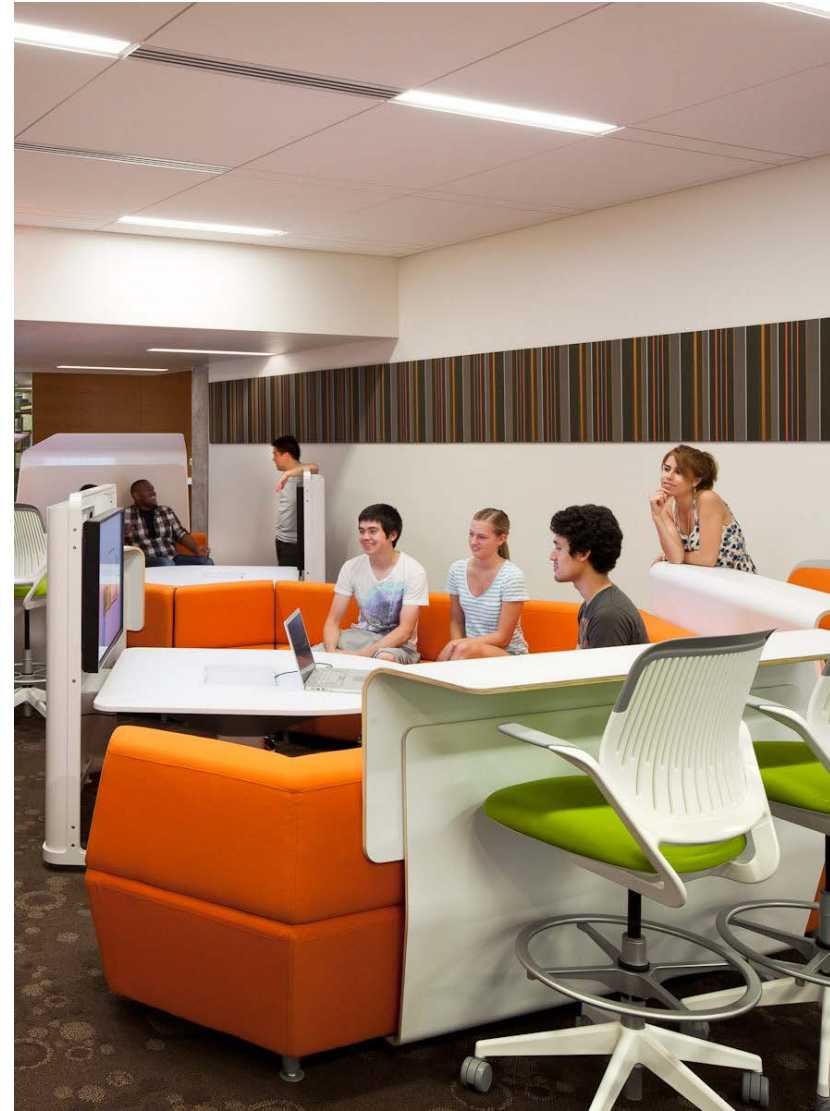
STUDY SPACES



STUDY SPACES



COLLABORATIVE LEARNING



COLLABORATIVE LEARNING



GROUP STUDY



LEARNING COMMONS



LEARNING COMMONS



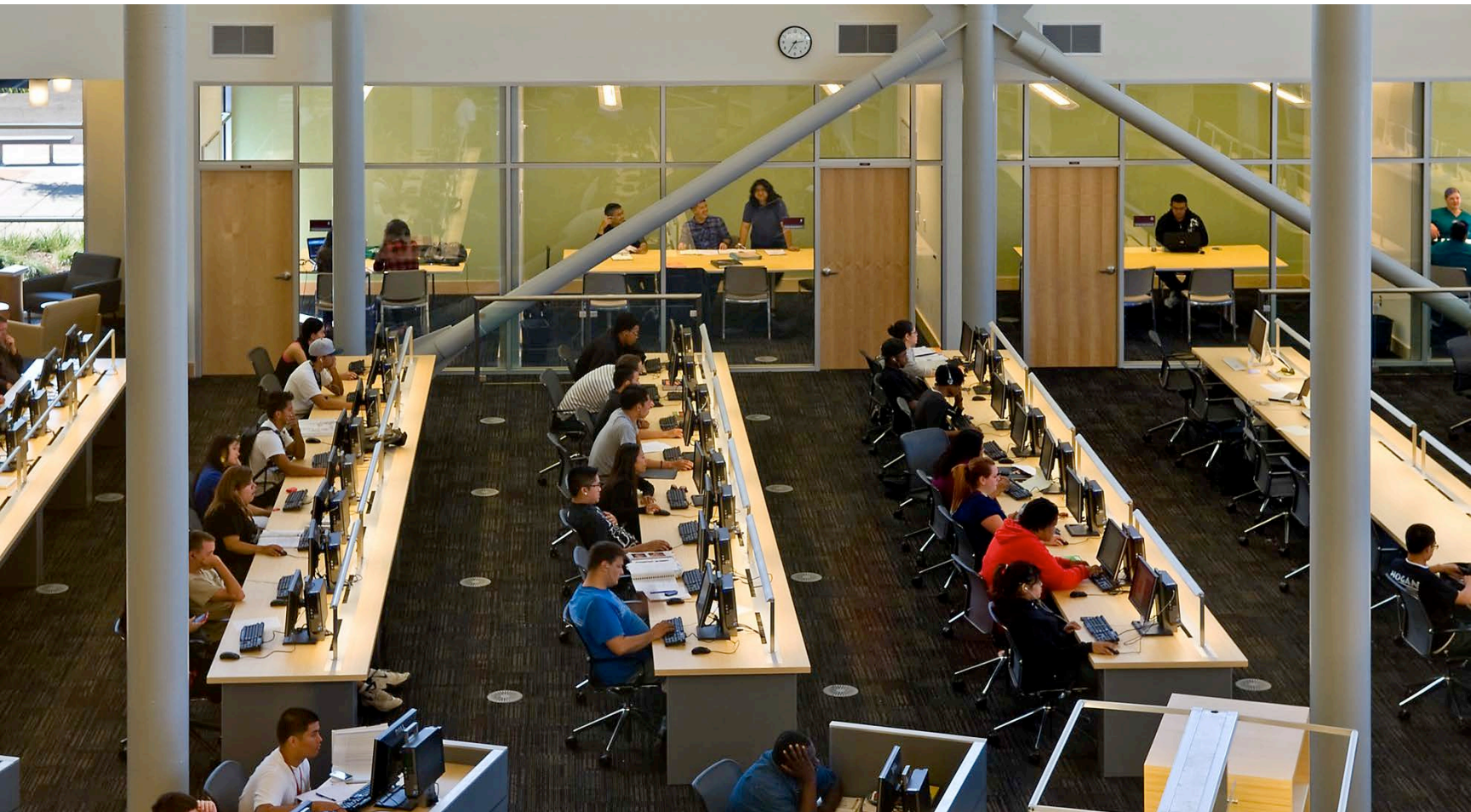
INSTRUCTIONAL SPACES



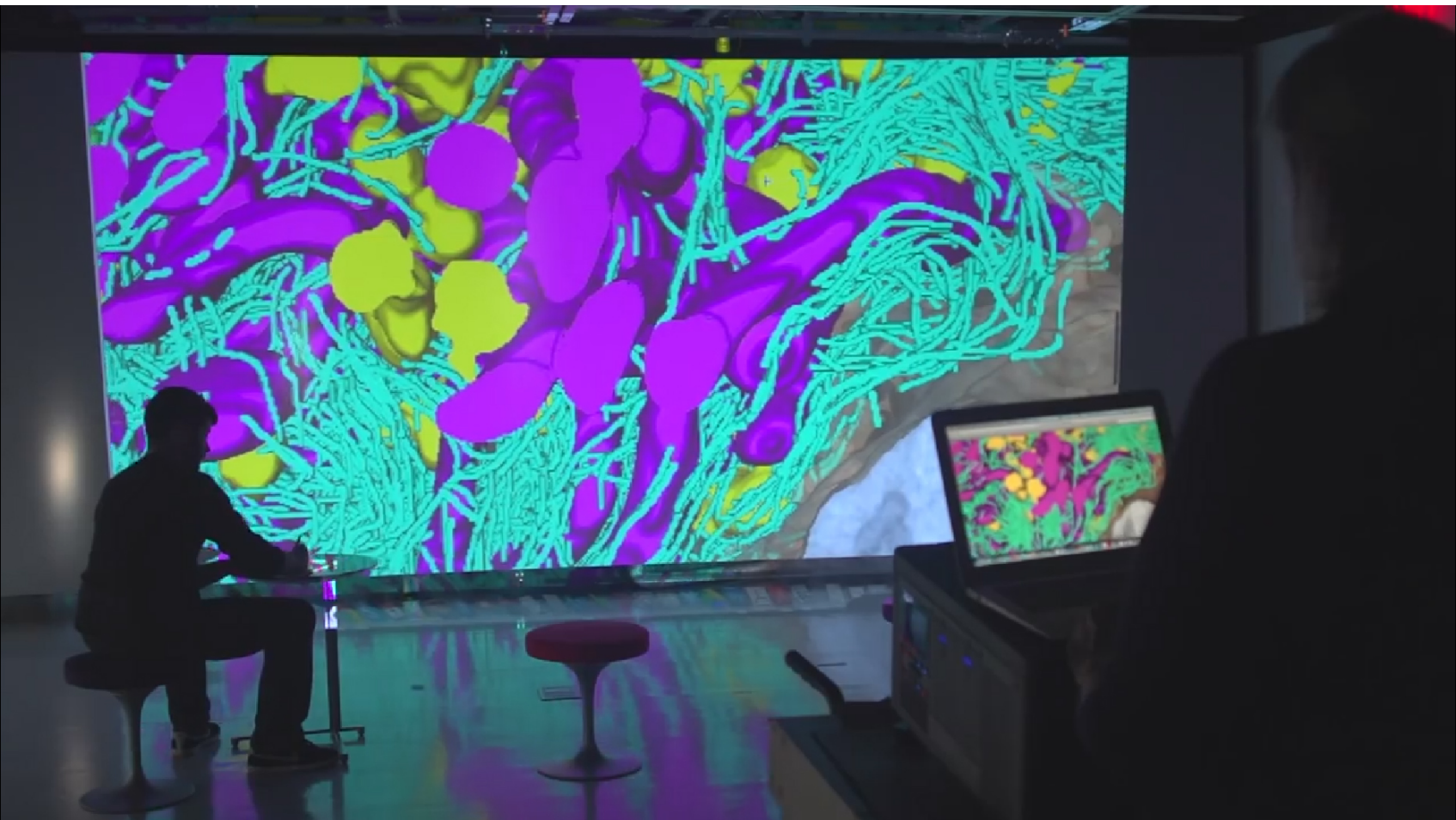
INSTRUCTIONAL SPACES

TECHNOLOGY ENHANCED LEARNING

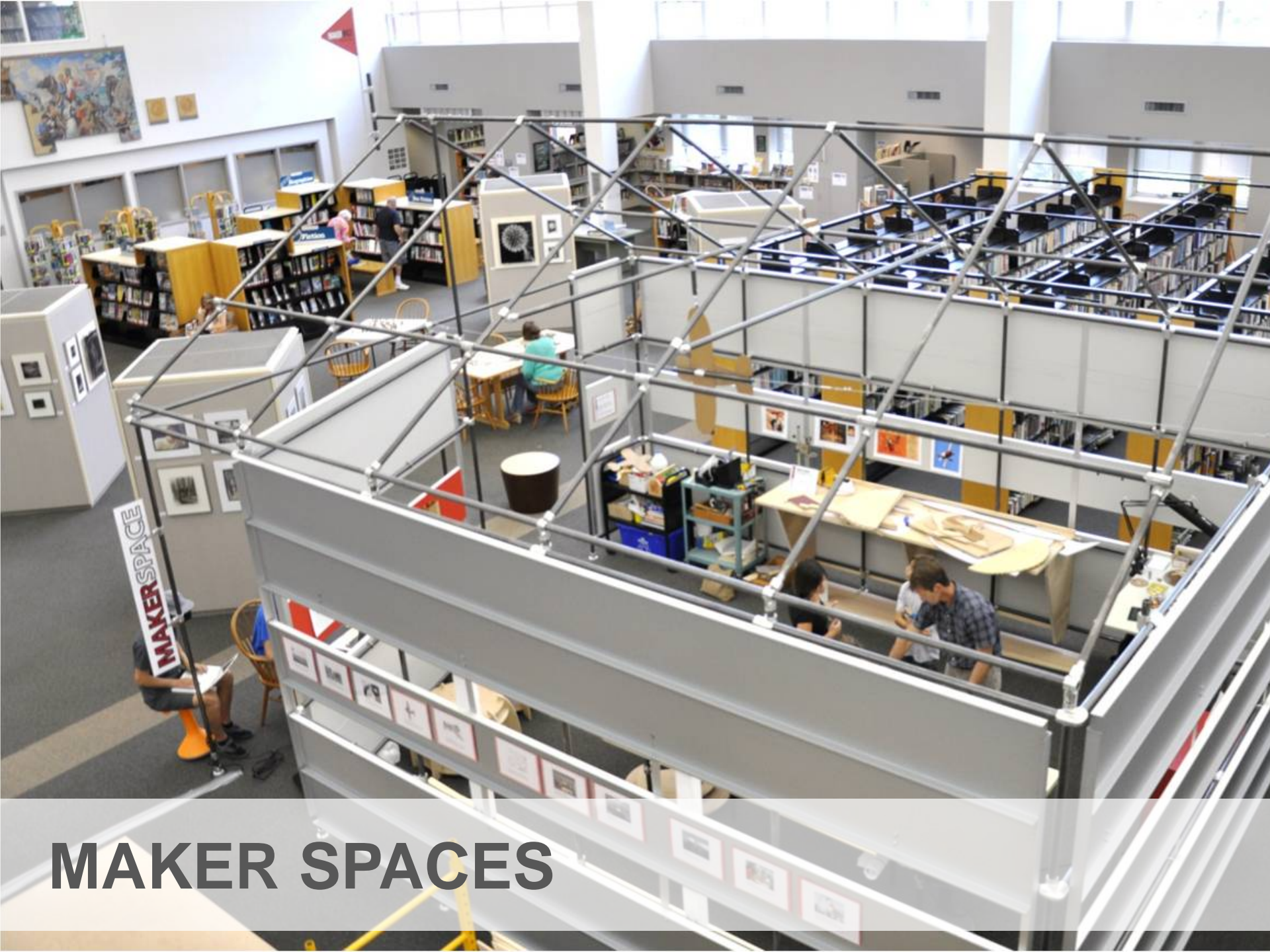




TECHNOLOGY ENHANCED LEARNING



TECHNOLOGY ENHANCED LEARNING



MAKER SPACES



MAKER SPACES



CAFÉS



CAFÉS



ZONING OF SPACES



ZONING OF SPACES



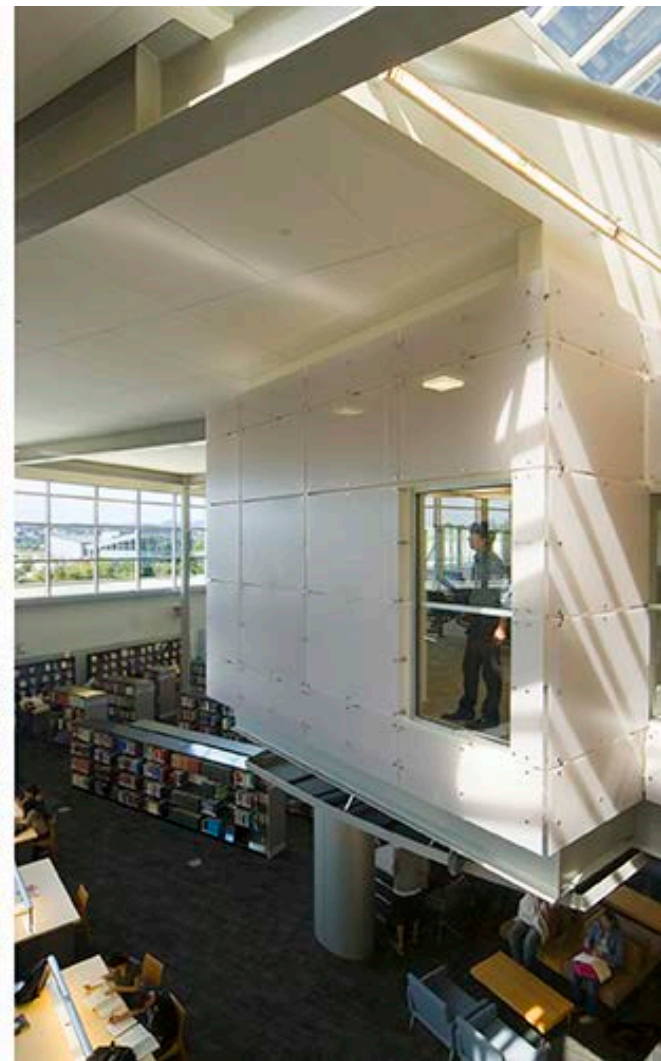
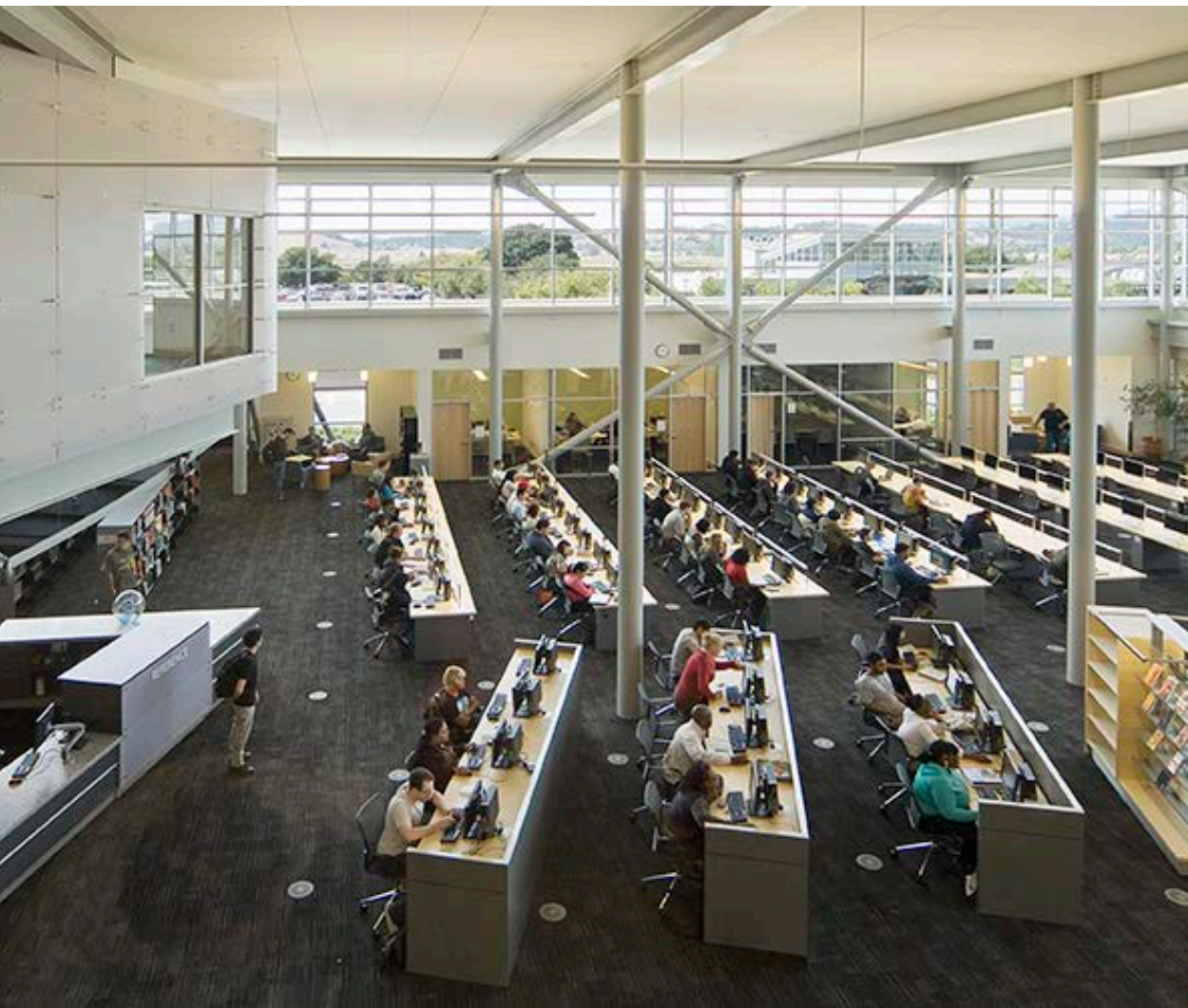
LIGHTING / DAYLIGHTING



LIGHTING / DAYLIGHTING



LIGHTING / DAYLIGHTING



DAYLIGHTING



ACCESSIBILITY



VARIETY OF FURNITURE TYPES



FURNITURE AND TECHNOLOGY



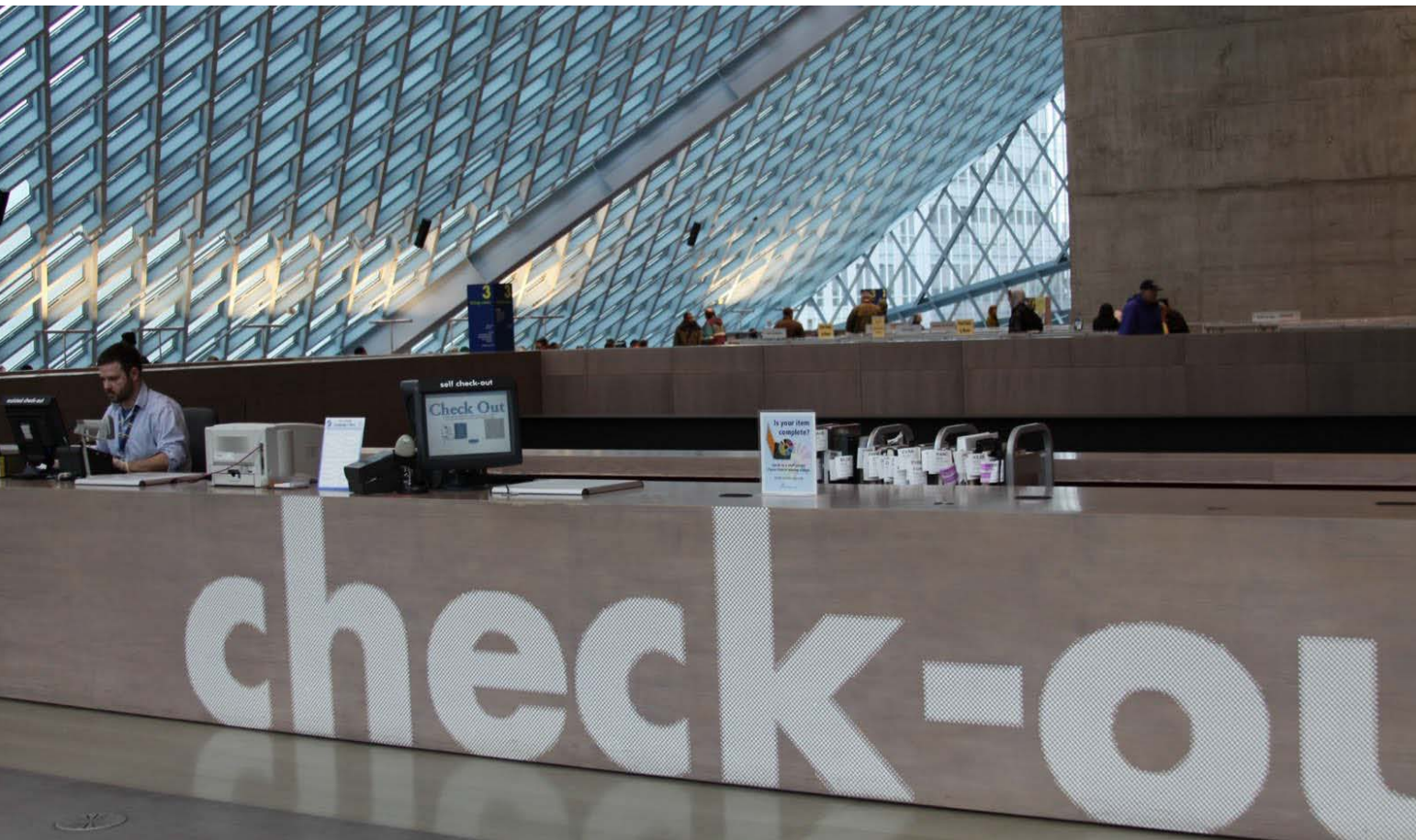
TRANSPARENCY



TRANSPARENCY



LEGIBILITY & TRANSPARENCY



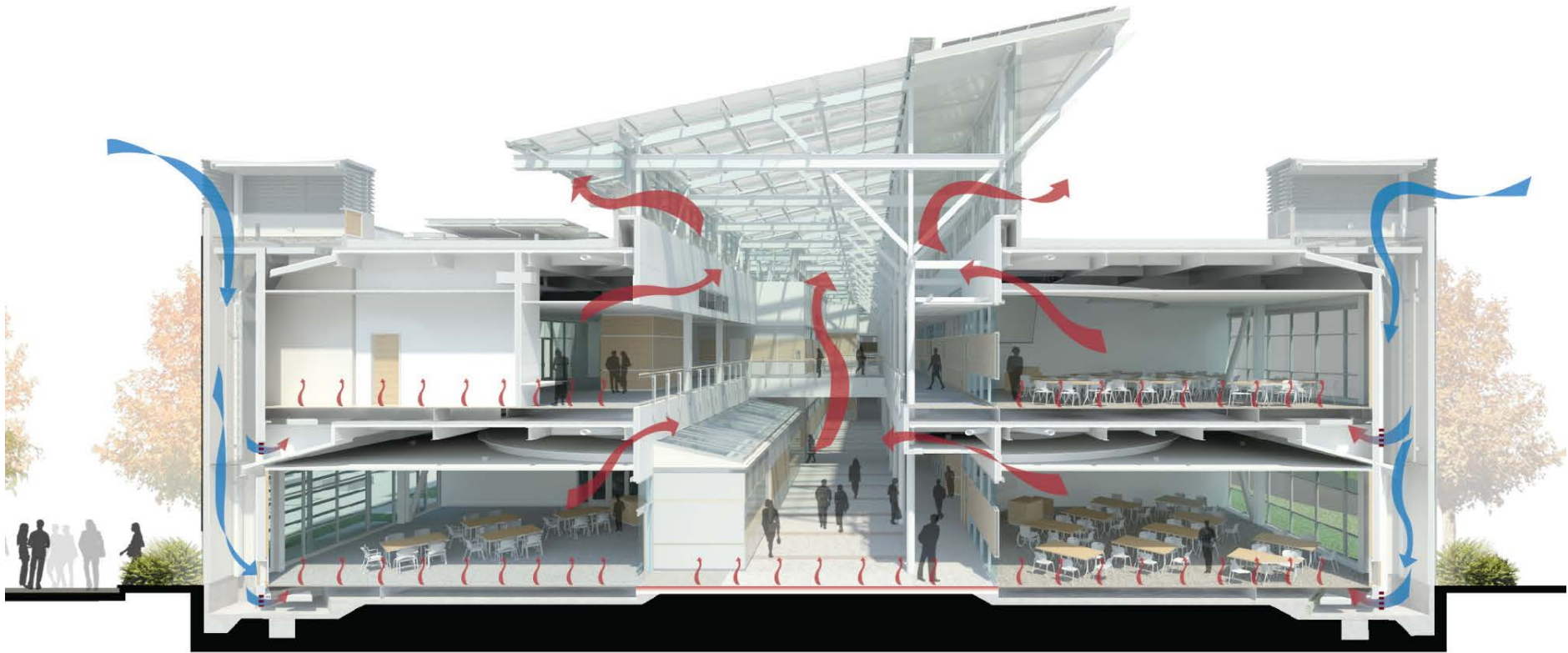
SIGNAGE



DIGITAL SIGNAGE



SUSTAINABILITY



SUSTAINABLE STRATEGIES

*Quantifying the Need:
Data, Collection & Use*

Beginning the Planning Process



- You will need data to justify a remodel or new facility
- Remember that campus resources are finite, competition for \$\$ can be fierce.
- Know your campus, know your District.
- Be actively involved & visible in campus/district planning

Data that You Will Need

hello!
633,437
Visits to the
library last year



Santa Rosa Junior College Libraries
ANNUAL REPORT 2014-2015

1 RESEARCH IMPACT | INVITING DISCOVERY
Foster learning and academic excellence

5,532,044
Database Searches
501,717
Database Sessions

767
Instruction Sessions
10,568
Students Taught

1,162,726
Website Visits

17,496
Reference
Questions Answered

2 EQUITY & ACCESS | CHANGING LIVES
Expand opportunities and eliminate barriers

SNAPSHOT
Students who
use the library

THE LIBRARY REACHES
a higher concentration of
underrepresented populations
than exists in the SRJC
student population mix

	students % using library	% SRJC students
Latino	35.6	30.7
Asian	5.5	4.4
African American	4.3	2.3

30%
are the first
generation
to go to
college

52%
are eligible
for
financial
aid

13%
are
students
with
disabilities

3 NAVIGATION | INCREASING SUCCESS
Provide responsive learner-centered environments

ACCESS
7,320 Barriers Eliminated

Eliminate obstacles to researching
and completing assignments

SUPPORT
13,422 Problems Solved

Create a convenient, responsive
environment for productive learning

WAYFINDING
6,566 Locations Found

Provide a safety net for students
new to SRJC and academic life

- Annual reports, Accreditation, Program review
- Usage Statistics: Gate counts, database searches, students served
- Furniture and Equipment Inventory
- Square footage of the facility (GSF & ASF)

CCL Spring Workshop

More Data



- Day Graded Enrollment & FTES
- District Academic/ Education Master Plan
- District Facility Master Plan
- District Technology Plan
- Library Facility Standards
- CCL webpage has URL for both standards

Defining the Problem



- User conditions
- Technology issues
- Collections & Resources
- Accessibility
- Infrastructure

Develop Goals for the Project

Plug in at your library

We have **150+ electrical outlets** to charge your devices all over the library, including the 2nd floor laptop bar.



- User needs
- Access
- Technology
- Instructional Support
- Campus/District needs
- Collections & Storage

Assembling a Planning Team



The size and scope of project will impact team composition:

- Core Team (smaller)
- Advisory Committee (larger)
- Library/LRC staff
- Other user groups
- IT/Media
- Facilities

Don't forget the Students !!!

Managing the Process



- **Establish a clear communications strategy**
- **Make sure someone is responsible for decisions (Core Group)**
- **Maintain & Publish agendas/meeting notes/regular schedule**
- **Be involved, make time for this no matter how busy you are.**

Visioning Session

Imagine... the Ideal CCC Library



Project Parameters:

- Serves campus of 20,000 FTES
- 100,000 volume book collection
- Active day & night programs
- Strong balance between occupational and general education
- First major renovation of 25-year facility

Imagine... the Ideal CCC Library



What would be its:

- **Project** Core Values
- Image/Message **to the Community**
- Technology **Features**
- Architectural **Features**
- Sustainability **Goals**

Discussion, Q & A



WELCOME
TO
HUNT LIBRARY

Ask
Ask Us



Ask Us



EMERGING ISSUES

LUNCH BREAK!

AGENDA - AFTERNOON

- 1:00 PM The Library Design Process**
- 1:20 PM Role of the Architects & Consultants**
- 1:30 PM A Case Study – Foothill College Renovation**
- 2:15 PM The State Facilities Process**
- 2:30 PM Under construction & Post Occupancy**
- 2:45 PM Share-out & Q & A**
- 3:15 PM Adjournment – Whew!!!**

The Library Design Process

Visioning



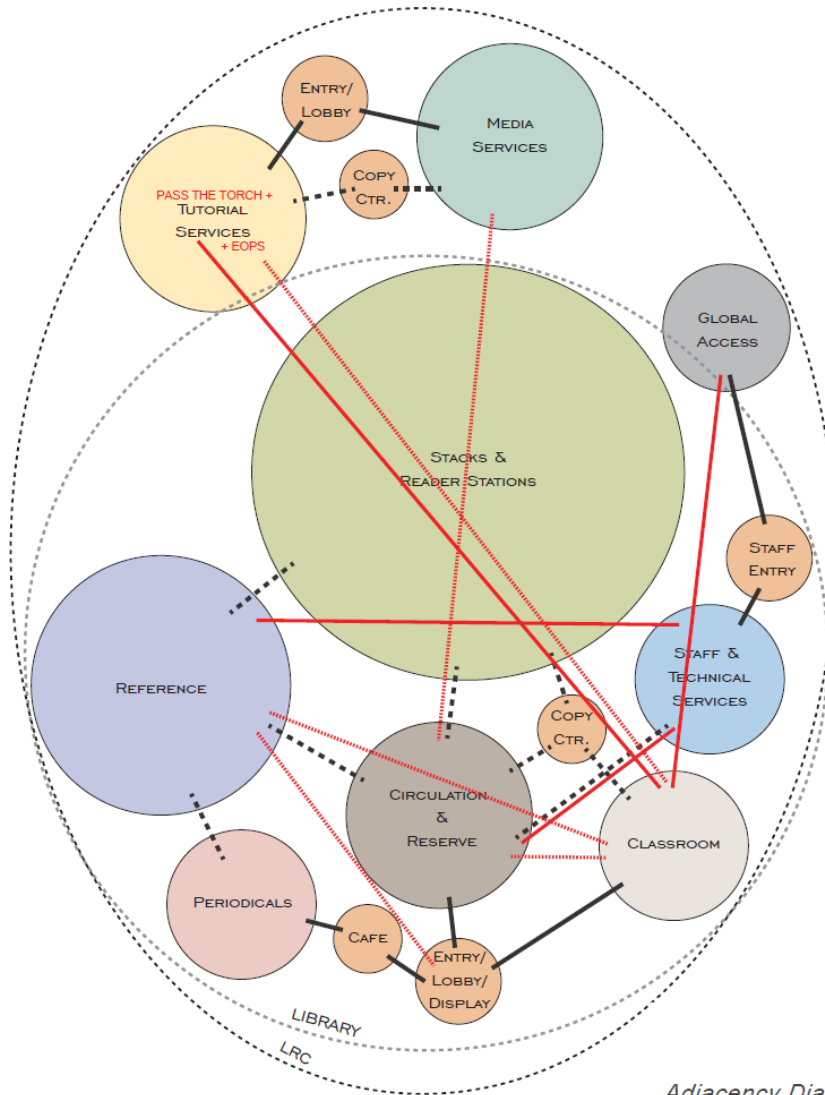
- Key ideas, key issues & Core values
- Who does the project serve & how
- Integration with campus planning
- Technology issues
- Spatial and architectural qualities
- Sustainability goals

Programming



- Project Goals
- Needs Assessment
- Space Allocations
- Adjacencies
- Supporting Infrastructure
- Furniture and Equipment
- Prioritizing Needs

Developing the Building Program



Adjacency Diagram

- Captures all the project key ideas & issues
- Provides a “Project Memory” captures decisions and details
- Includes Furniture Fixture and Equipment (FF&E) lists
- Includes Technology/ AV/ Communications needs
- Communication Tool for Architects & Consultants

Programming Tools



- **User Interviews**
- **Room Data Sheets**
- **Touring**
- **Interactive Workshops**
 - **Site Diagramming**
 - **Adjacencies**
 - **Stacking**
- **Site and Program Test-fits**
- **Cost Modeling**

Site/ Building Assessment



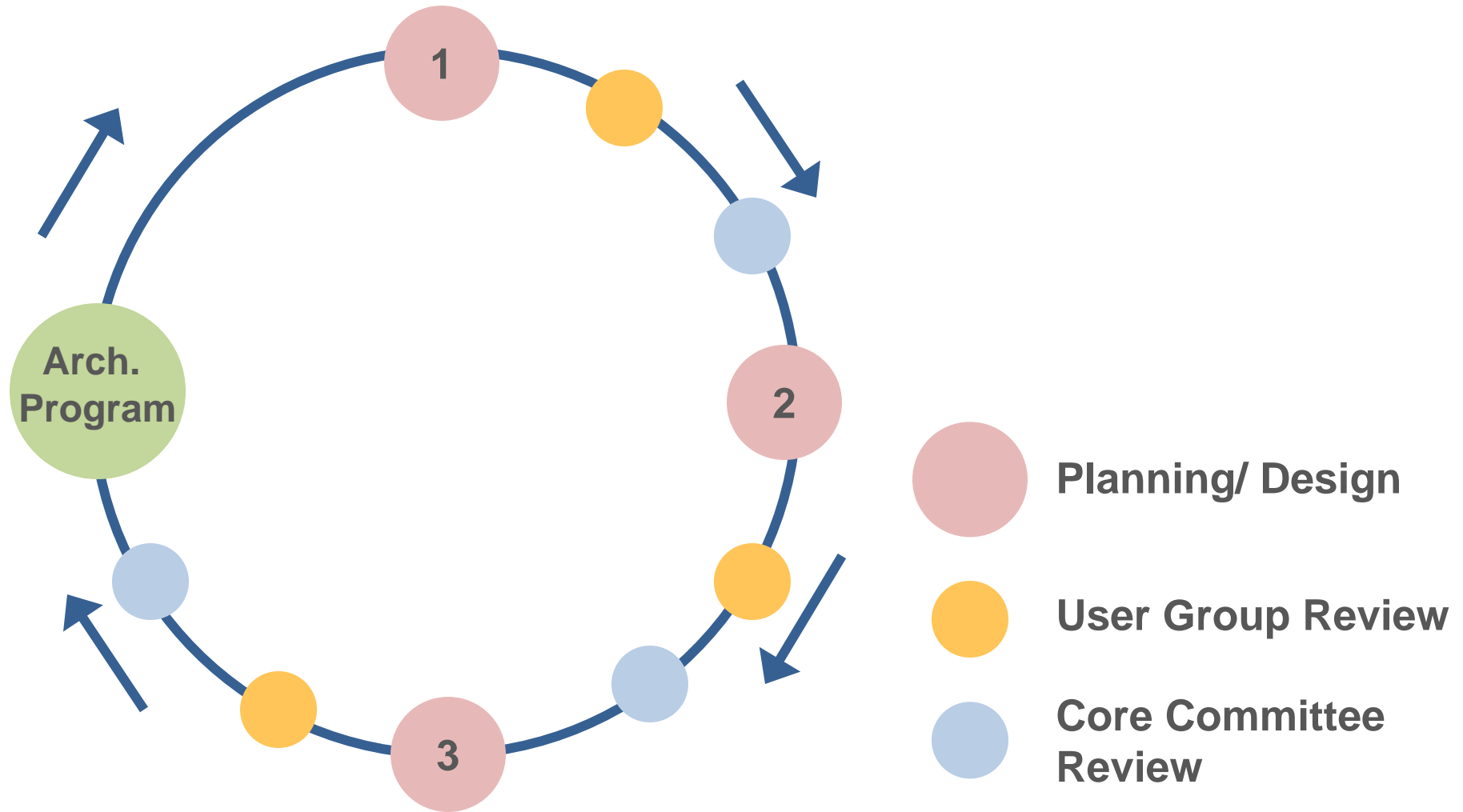
- **Analysis of Existing**
 - **Architectural**
 - **Code Analysis**
 - **Fire Life Safety**
 - **ADA Compliance**
 - **Op. + Planning Requirements**
 - **Structural**
 - **MEP**
 - **Telecom/Security**
 - **Code/Accessibility**
 - **Sustainability**
- **Prepare BER**

Design



- Program, planning & conceptual design
- Adjacencies & stacking (in multi-story facility)
- Master Plan Data (Facilities MP & Ed MP)
- Facility advantages & constraints (from BER)
- Develop plans, sections, elevations, 3D views, etc.
- Architectural character
- Cost modeling

Design is Iterative



Project Phases

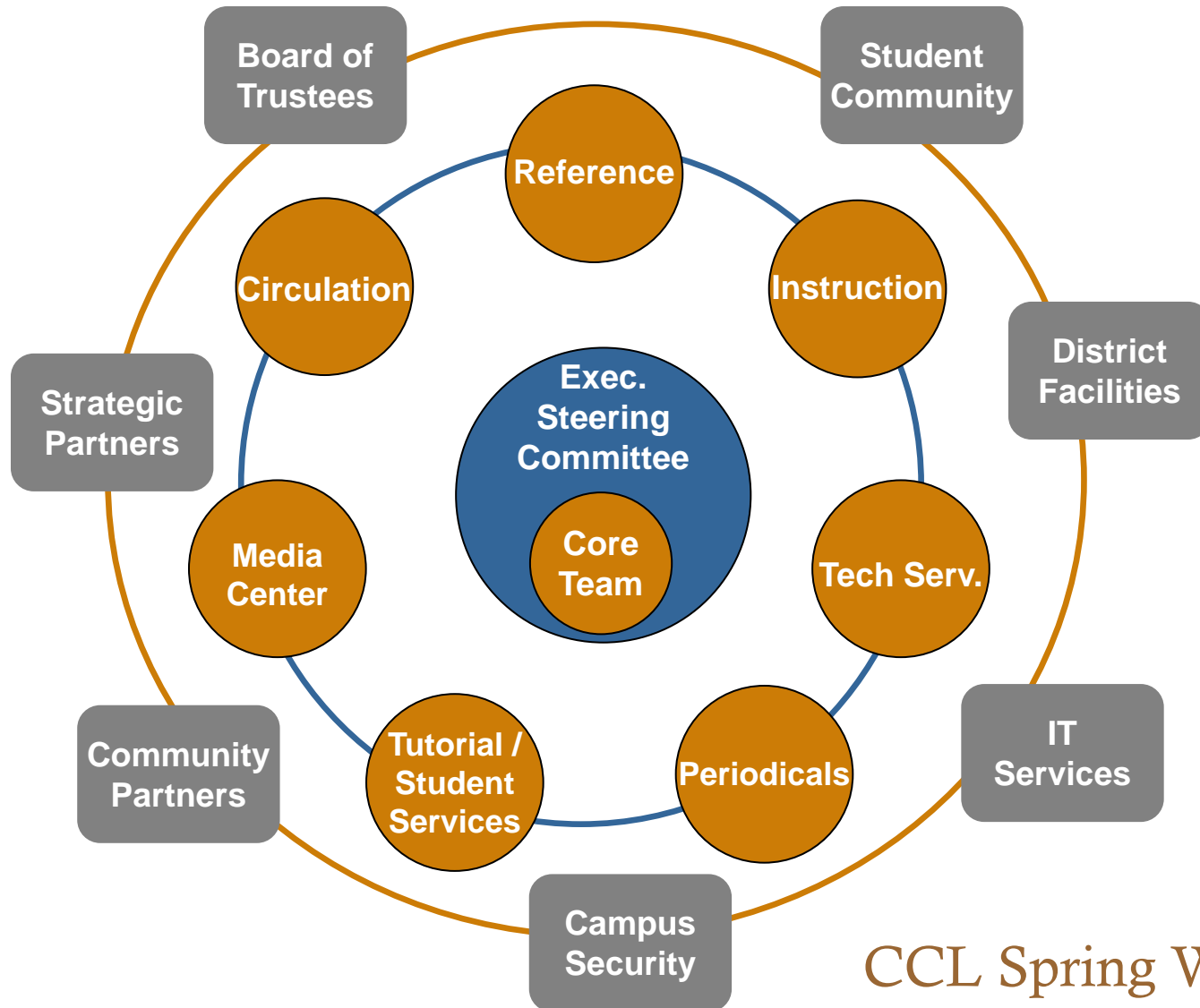


- **Programming, Planning & Conceptual Design (Pre-Design)**
- **Schematic Design**
- **Design Development**
- **Construction Documents**
- **Agency Review (DSA)**
- **Bidding**
- **Construction Administration**
- **Closeout**

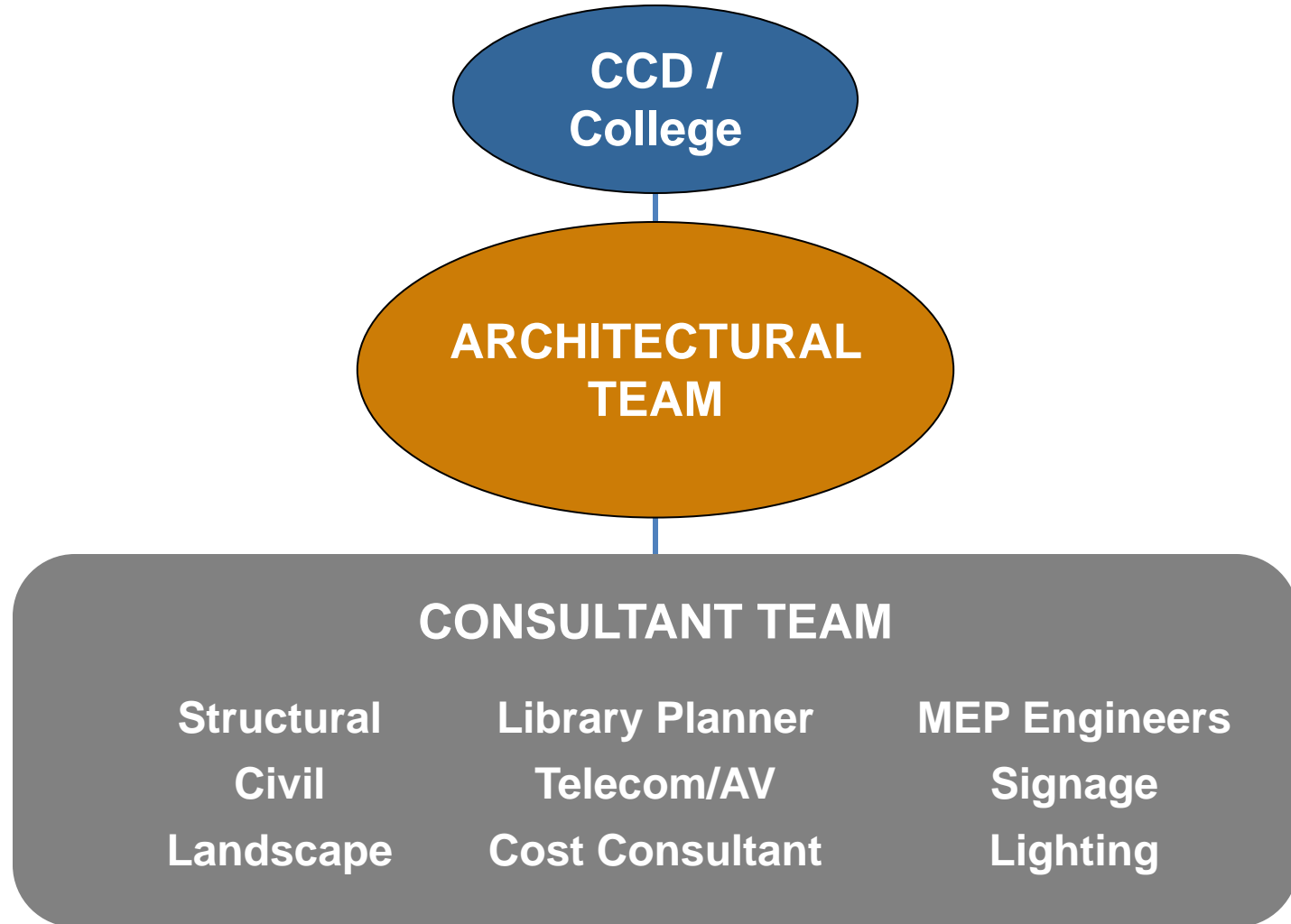
CCL Spring Workshop

The Role of Architects and Consultants

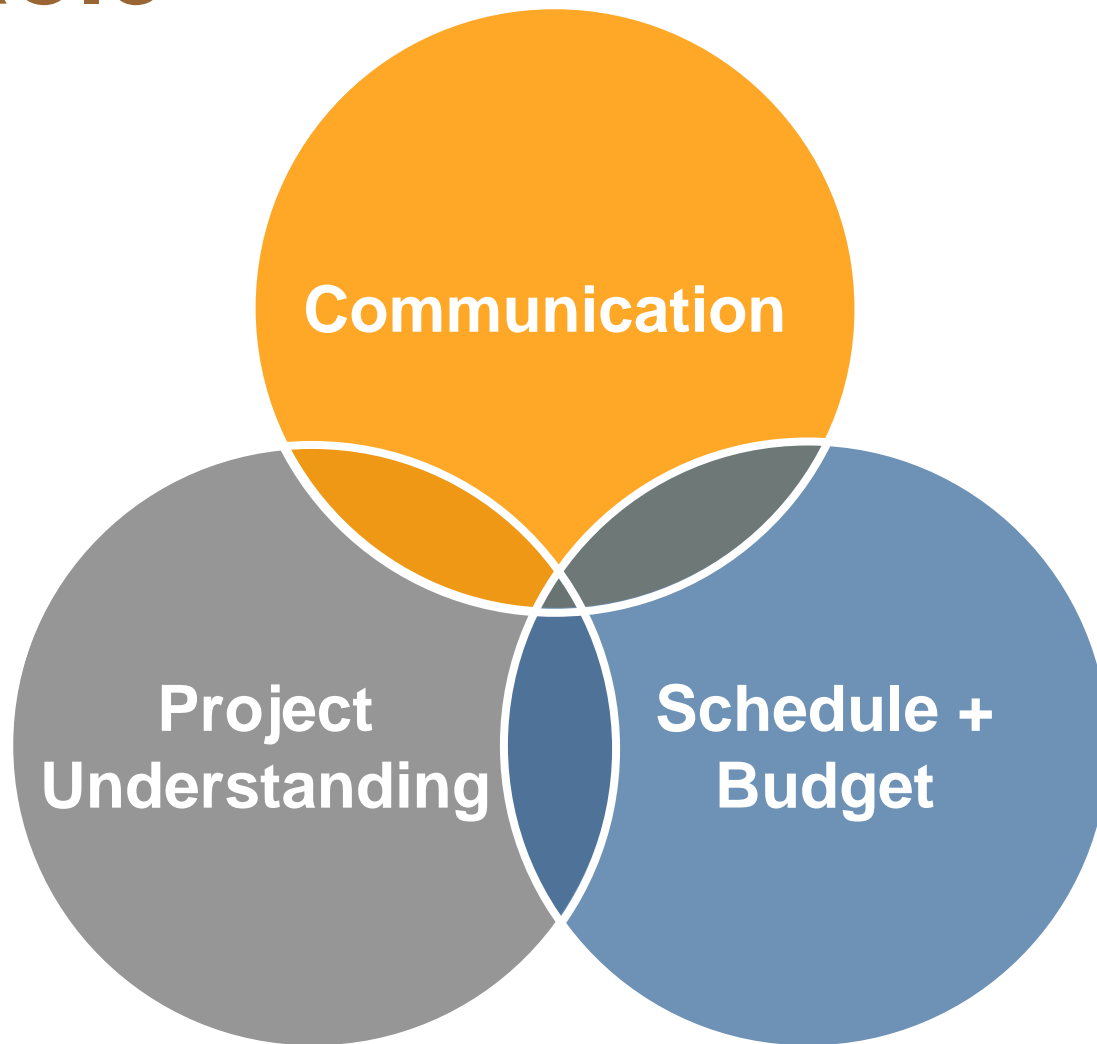
The CCCD Team



The Design Team



Our Role



Case Study: Foothill Library Renovation

Project Facts

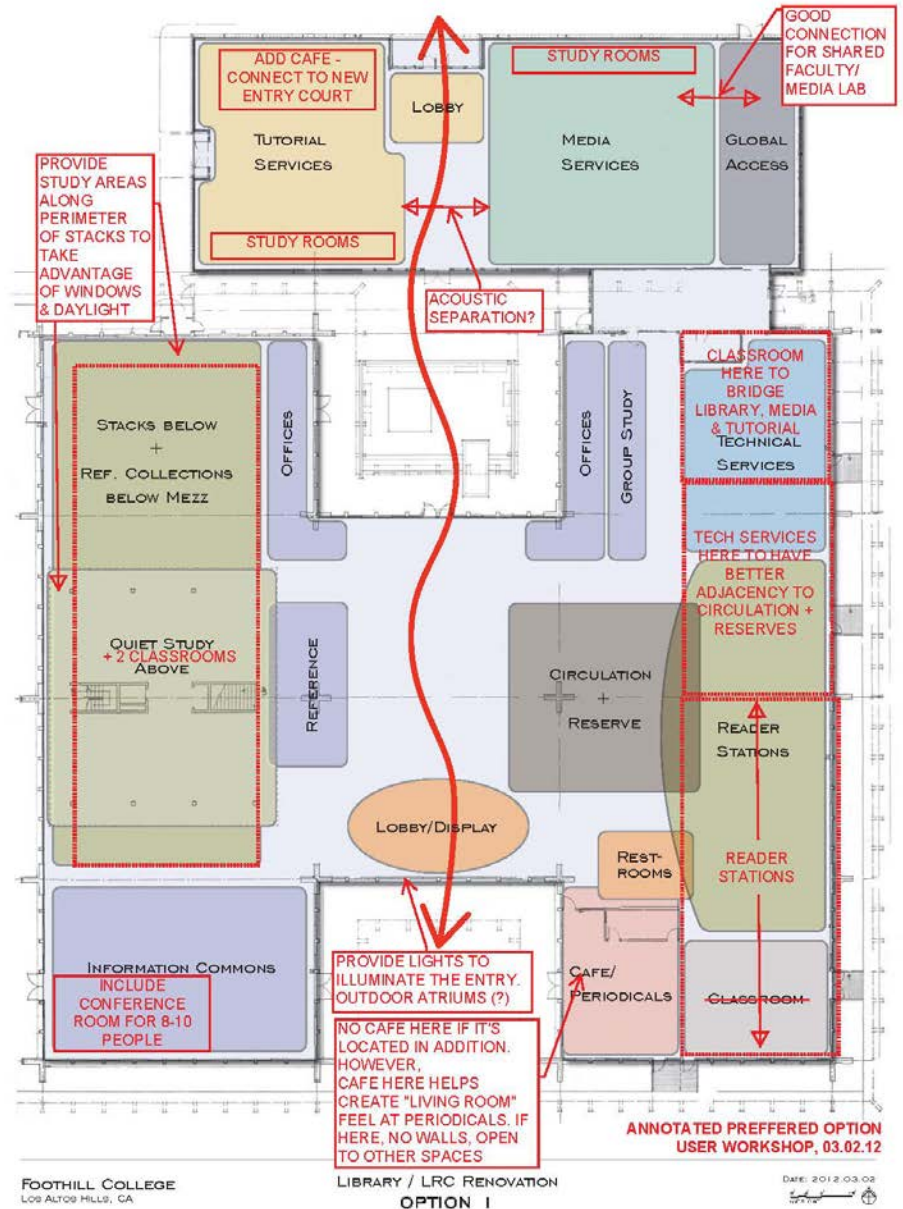
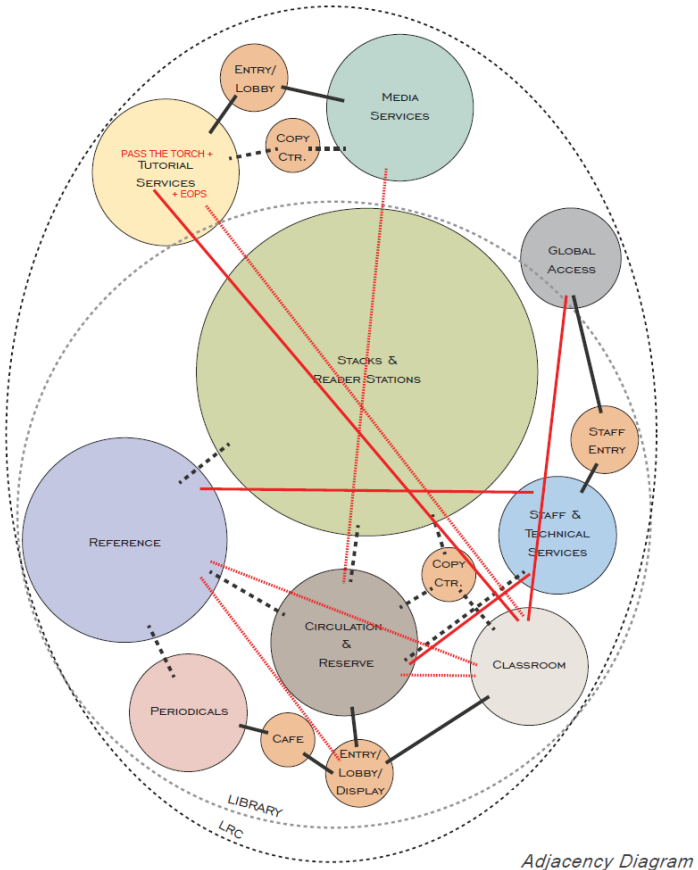


- **Project Scope includes**
 - HVAC Replacement
 - Voluntary Seismin
 - Roof replacement
 - Interior gut remodel
- **Design & Construction – 4 years, including programming and pre-design**
- **Phased Construction (12mo. + 6 mo.)**
- **Construction Cost - \$10.5M**

Purpose & Goals

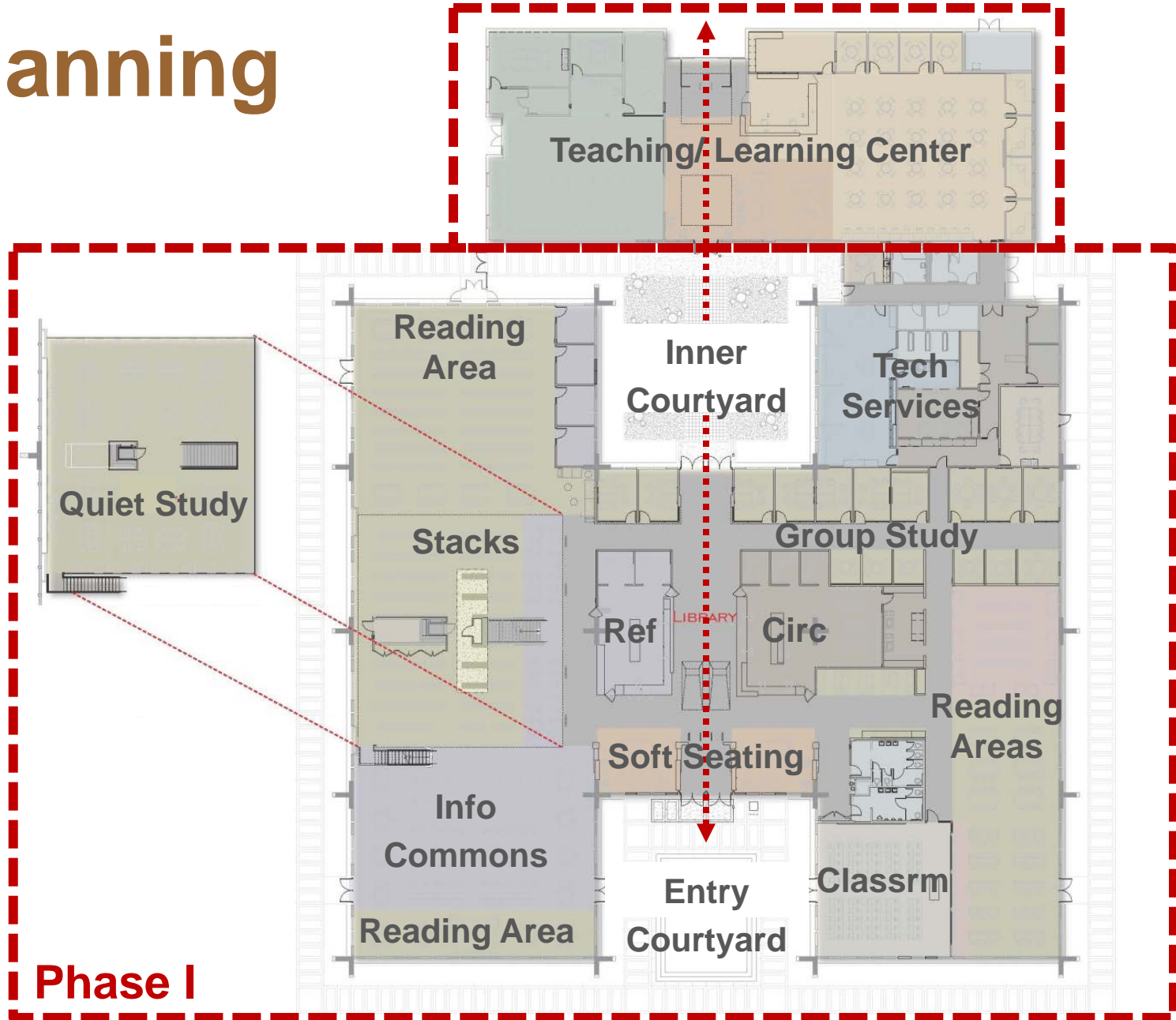
- **Modernize Library for 21st century learners, creating student centered library designed for users**
- **Create a welcoming environment – “Campus Living Room”**
- **Incorporate flexibility & variety of learning spaces**
- **Maintain historic quality**
- **Improve flow & connectivity**
- **Open, transparent and light filled**

Programming



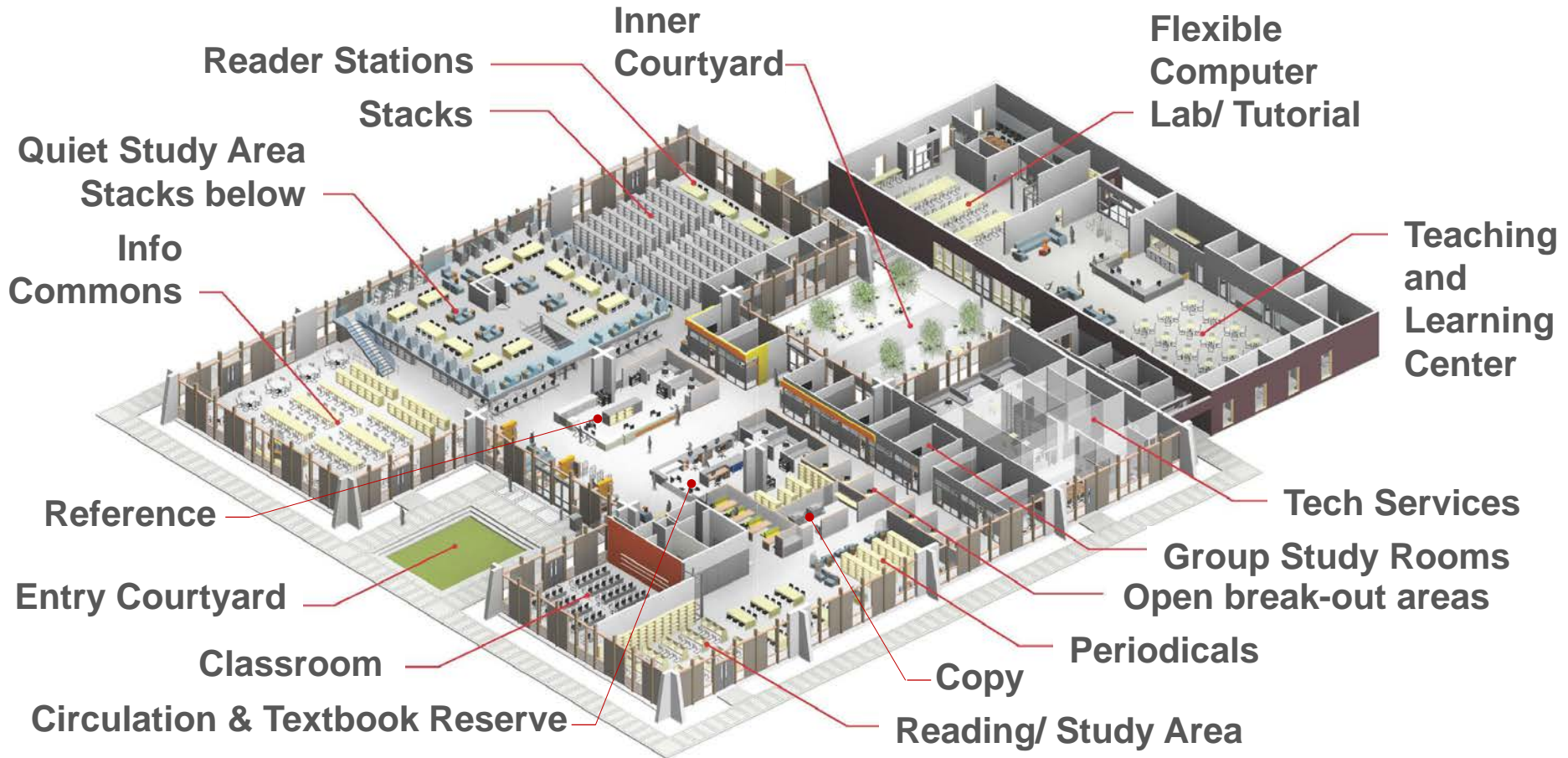
Planning

Phase II



Phase I

Zoning



Concept Design

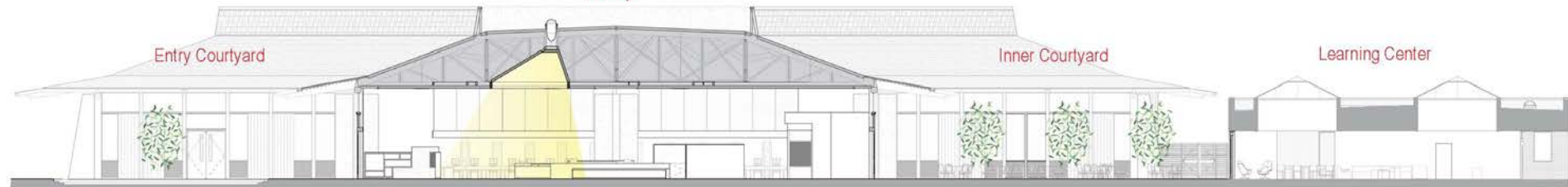


Library

Entry Courtyard

Inner Courtyard

Learning Center



Welcoming Place



Campus Living Room



Design for 21st Century Learners



Variety of Learning Environments



Technology Integration



Open, Transparent, Light-filled



Maintain Historic Character



Connectivity & Flow



Sense of Place



The State Facilities Process

The State Facilities Process



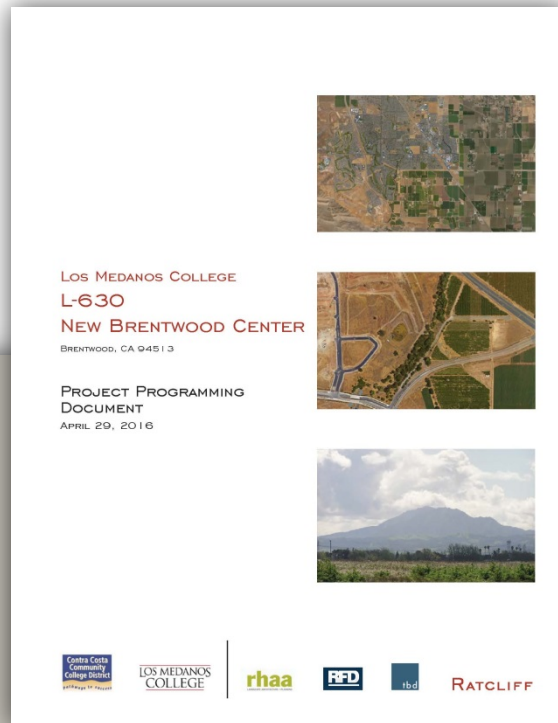
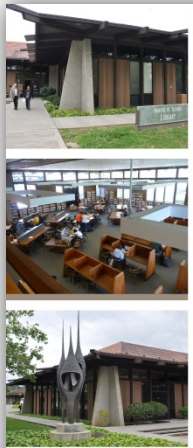
California Community Colleges
Chancellor's Office

- The CCCCO – Division of Finances & Facilities is in charge of facilities projects
- The submittal process has been streamlined, but “Byzantine” is also an apt description
- Submittal & process managed by your campus/District Facilities Planning.

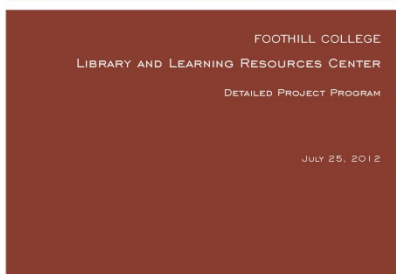
<http://extranet.cccco.edu/Divisions/FinanceFacilities/FacilitiesPlanning/ReferenceMaterials/FacilitiesPlanningManual.aspx>

CCL Spring Workshop

Steps in State Process



- IPP Submittal (streamlined from past)
- FPP (contain needs assessment, project rationale, conceptual design, costs data)
- Your role will be to supply information at each step
- The more you understand about FTES, DGES, TOPS codes, the better.



JCAF, TOPS, Program & Budget

Default CCI: Default EPI:

Room Codes	TOP #s	Description	Const. Cost / ASF		Equip. Cost / ASF		Cost / GSF	% Efficiency
			Default	Base	Default	Base		
110-115	0099-4999	Classroom	\$495.00	\$380.00	\$14.97	\$12.83	\$321.43	65%
210-255	0100-0199	Agr. and Nat. Res. (on campus)	\$763.00	\$586.00	\$76.11	\$65.22	\$495.68	65%
210-255	0100-0199	Agr. and Nat. Res. (on site)	\$329.00	\$253.00	\$17.62	\$15.10	\$279.85	85%
210-255	0200-0299	Architecture and Related Technologies	\$569.00	\$437.00	\$92.94	\$79.65	\$369.64	65%
210-255	1600-1699	Library Science	\$495.00	\$380.00	\$28.53	\$24.45	\$321.43	65%
410-420	6110,6120	Library - Reading and Stack Space	\$384.00	\$295.00	\$35.14	\$30.11	\$268.72	70%
430-440	6110,6120	Library- Electronic Carrels and Processing Room	\$675.00	\$519.00	\$217.66	\$186.53	\$472.77	70%
620-625	6140,6800,6960	Exhibition Areas	\$549.00	\$422.00	\$40.17	\$34.42	\$384.41	70%
630-635	6940	Cafeteria	\$410.00	\$315.00	\$31.66	\$27.13	\$307.44	75%
650-655	0000-9600	Staff Lounge	\$492.00	\$378.00	\$24.26	\$20.79	\$319.74	65%
670-675	6960	Recreation Areas	\$580.00	\$446.00	\$101.25	\$86.77	\$377.26	65%
680-685	0000-9600	Meeting Rooms	\$492.00	\$378.00	\$24.26	\$20.79	\$319.74	65%

Under Construction & Post Occupancy

Under Construction



- Phasing and temporary facilities
- Live campus/ secure construction site
- What are realistic expectations once construction has started?
- Beware of value engineering (VE)
- Get permission to access site on a regular basis
- Coordinate with Development Office regarding fundraising efforts

Post Occupancy

Santa Rosa Junior College Libraries | Annual Report 2014-2015 | 2

4 USER VOICES

The library puts valuable resources at your disposal and is easy to use.



I had no idea how much information the library had to offer.

Learning how to evaluate information from different perspectives will help me in the future.



5 COLLECTIONS

EXPLORING PERSPECTIVES
Engage students and spark intellectual curiosity



98,660
Items Circulated



165,619
Print Books

164,565
eBooks

44
Databases
281,701
Article Downloads



28,966
Textbook
Loans

6 PROFESSIONAL IMPACT & STUDENT OUTREACH

INNOVATIVE OUTREACH



8 therapy dogs helped 320 people have stress-free finals



Poems hung on campus trees for National Poem in Your Pocket Day

LIBRARY FACULTY & STAFF HOSTED CONFERENCES ON:

- Improving discovery systems for research
- Information literacy and student success

DRAWING OVER
100
attendees from around the region and state

LIBRARY FACULTY & STAFF ENGAGED IN THE SCHOLARLY CONVERSATION

7
PAPERS
PUBLISHED

17
PRESENTATIONS
GIVEN

1
GRANT
RECEIVED

19
BOOKS
REVIEWED

- Post-Occupancy Evaluation
- Student Surveys
- Measurable Outcomes
- Metrics
 - Gate count
 - Use of collections
 - Access to other resources
- Adjustments & lessons learned for future projects

CCL Spring Workshop

Discussion, Q & A



ADJOURN - THANK YOU!